

Contrabasso George Frederick Handel (1685-1759)

Concerti Grossi Op. 3

Concerto No. 2 in Bb Major (Hanover: 1716)

Edition of the German Handel Society (Leipzig: 1865)

Parts extracted by Charles-David Lehrer

Vivace.

Contrabasso

1

f *p*

7

14

21

33

40

47

56

f

Grave.

Detailed description: This block contains the musical notation for the Contrabasso part of the Vivace section, measures 1 through 56. The notation is in bass clef with a key signature of two flats (Bb major). The time signature is 3/4. The piece begins with a forte (*f*) dynamic and a first ending bracket over measures 1-6. It features various rhythmic patterns including eighth and sixteenth notes, and rests. A piano (*p*) dynamic appears in measure 10. The section concludes with a forte (*f*) dynamic in measure 56, followed by a double bar line and the word 'Grave.'.

Largo.

63

p

69

76

Detailed description: This block contains the musical notation for the Contrabasso part of the Largo section, measures 63 through 76. The notation is in bass clef with a key signature of two flats (Bb major). The time signature is 3/4. The piece begins with a piano (*p*) dynamic and a first ending bracket over measures 63-66. It features various rhythmic patterns including eighth and sixteenth notes, and rests. The section concludes with a double bar line in measure 76.

83



90



97



104

Allegro.

112



118



124



130



136



142



148



155

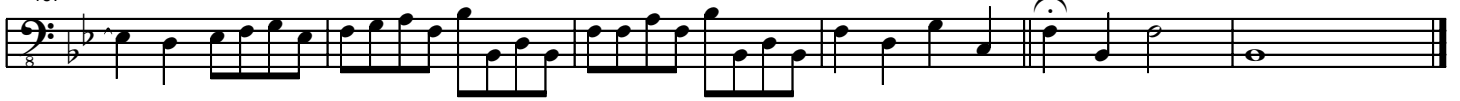


161



Adagio.

167



Menuetto.

173



191



198

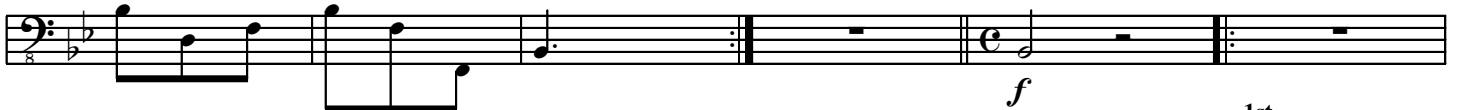


212

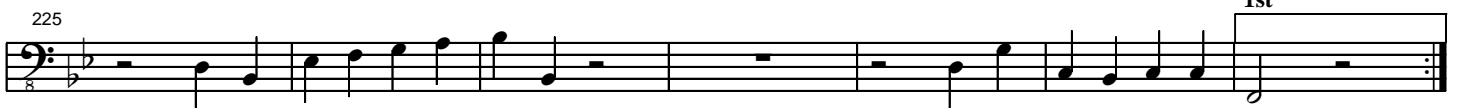


219

Gavotte.



225



232



239



245



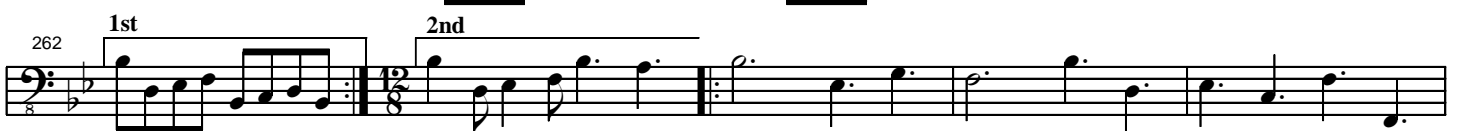
251



256



262



267

1st

Staff 267-271: Bass clef, key signature of one flat (B-flat). Measure 267 starts with a bass line of 8. The staff contains a sequence of eighth notes with stems pointing up, followed by a repeat sign and a first ending bracket labeled '1st'.

272

2nd

Staff 272-276: Bass clef, key signature of one flat (B-flat). Measure 272 starts with a bass line of 8. The staff contains a sequence of eighth notes with stems pointing up, followed by a repeat sign and a second ending bracket labeled '2nd'.

277

1st

2nd

Staff 277-281: Bass clef, key signature of one flat (B-flat). Measure 277 starts with a bass line of 8. The staff contains a sequence of eighth notes with stems pointing up, followed by a repeat sign and two ending brackets labeled '1st' and '2nd'.